

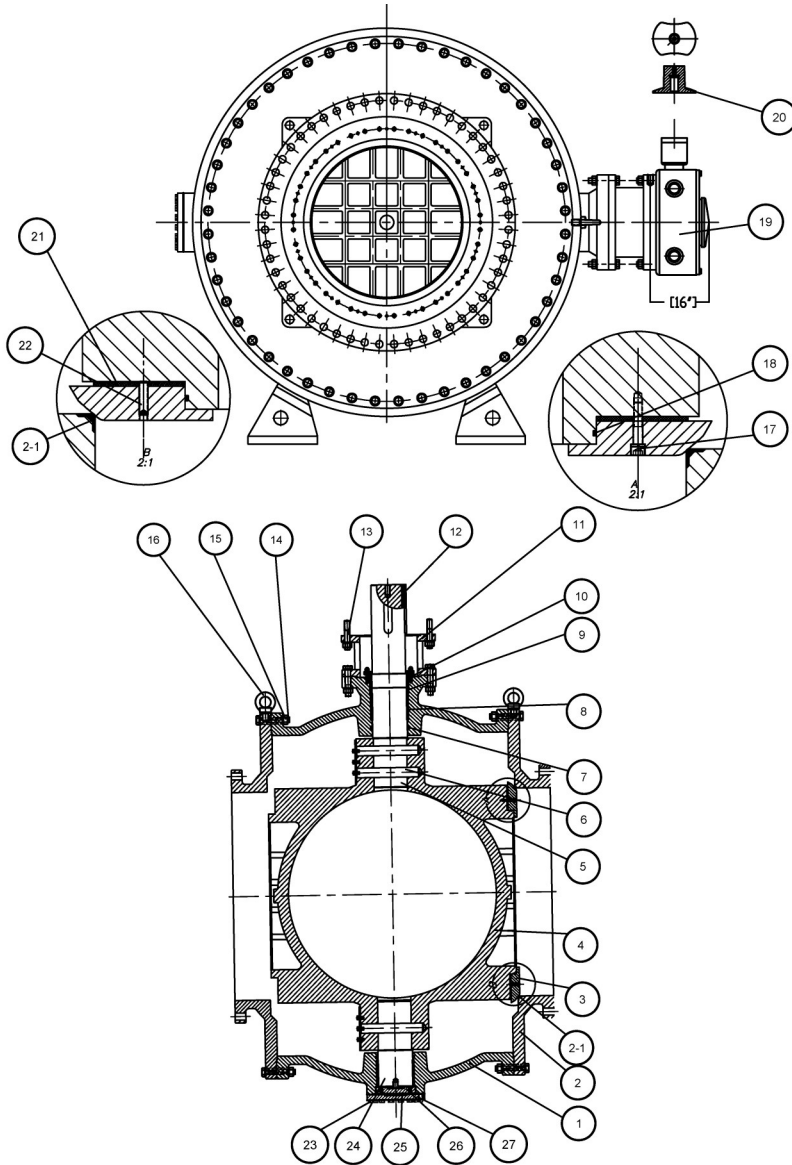
AWWA C507 METAL SEATED BALL VALVE

6" - 72"

The J&S Ball Valves operates equally well in both high and low velocity conditions minimizing cavitation concerns. Ideal for water and wastewater pumping service and excellent for throttling and isolation application.



SERIES 5000 METAL SEATED BALL VALVES



NO.	PART NAME	MATERIAL
1	BODY	DUCTILE IRON ASTM A536 65-45-12
2	SIDE BODY	DUCTILE IRON ASTM A536 65-45-12
2-1	BODY SEAT	STAINLESS STEEL
3	BALL SEAT	STAINLESS STEEL
4	BALL	DUCTILE IRON ASTM A536 65-45-12
5	UPPER STEM	STAINLESS STEEL
6	PIN	STAINLESS STEEL
7	V-RING	RUBBER
8	STEM BUSHING	BRONZE, B148 C95200
9	PACKING	RUBBER
10	PLATE	DUCTILE IRON ASTM A536 65-45-12
11	BRACKET	DUCTILE IRON ASTM A536 65-45-12
12	KEY	CARBON STEEL
13	SCREW	STAINLESS STEEL
14	BOLT	STAINLESS STEEL
15	NUT	STAINLESS STEEL
16	EYE BOLT	CARBON STEEL
17	SCREW	STAINLESS STEEL
18	O-RING	RUBBER
19	GEAR BOX	ASSEMBLY
20	SQUARE NUT	DUCTILE IRON ASTM A536 65-45-12
21	GASKET	RUBBER
22	SCREW	STAINLESS STEEL
23	BOLT	STAINLESS STEEL
24	LOWER STEM	STAINLESS STEEL
25	SPRING WASHER	BRONZE
26	PLATE	STAINLESS STEEL
27	BOTTOM COVER	CARBON STEEL

BODY

Ductile Iron
ASTM A536 Grade 65-45-12

VALVE ROTOR

Ductile Iron
ASTM A536 Grade 65-45-12

SEATS

Body Seat: Stainless Steel
Ball Seat: Stainless Steel

COATING

Fusion Bonded Epoxy
NSF-61 Certified
Inside and out
per AWWA C550

FLANGE CLASS

ANSI B16.1 125 or 250

SIZE

6" through 72"



Design and Materials Subject to Change without notice. Call for Verification and Any Updated Drawings

06162023

2323 1st Street, Huffman, Texas 77336 | JANDSVAVE.COM